

# Truly + Potts - Whole number

- 204 -

CHITTY CHITTY BANG BANG

26

## DOLL ON A MUSIC BOX

Potts  
Truly

Allegretto (in 4)

Cue: second twist of the key by the Toymaker

4



1-4

5 **TRULY**



9



13



17



21



25



29

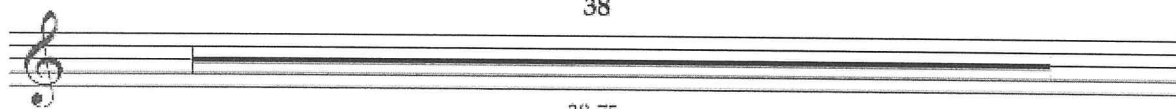


33



#26 - Doll on a Music Box

38



38-75

76 *Tempo primo* 80  
POTTS

*Cue to proceed: second crank.* Tru - ly

81

Scrup-tious; you're tru - ly, tru - ly scrump-tious;

84

Scrup-tious as a cher-ry peach par-fait

88

When you're near me, it's so de - li - cious;

92

hon - est, Tru - ly, you're the an - swer to my wish - es,

96 **TRULY**

You can-not see how much I long to be free;

(POTTS)

Tru - ly Scrump-tious, though I may seem pre - sump-tious,

100

Turn - ing a-round on this mus - ic box that's wound by a key.

nev - er, nev - er ev - er go a - way.

#26 - Doll on a Music Box